

Rotary Index Table

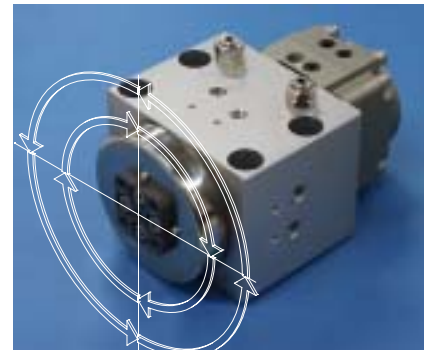
CRB1BS80 - 90D - X94 - 1

SMC CORPORATION
1-16-4 Shimbashi, Minato-ku
Tokyo 105-8659, JAPAN
URL:

4 indexing /rotation available

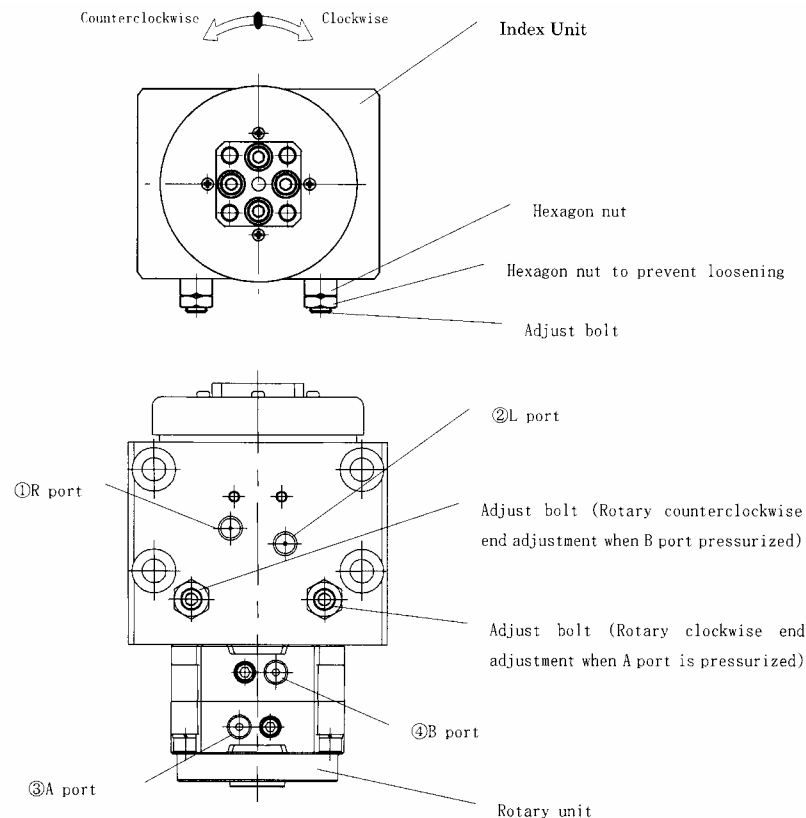
Application:

- Replacement of jig and parts
- Change of work station
- Reverse of work

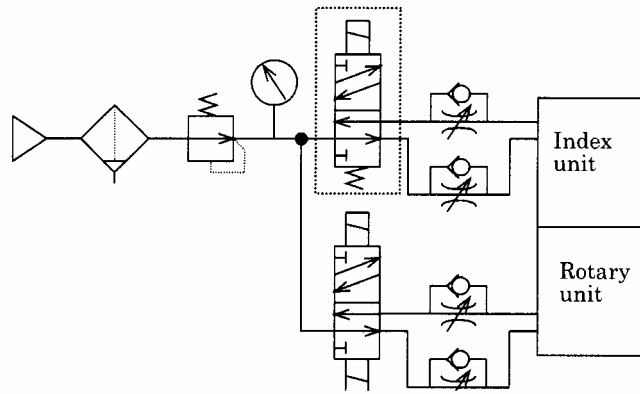


Feature:

- [1] Both clockwise and counterclockwise rotations possible
- [2] Per unit replacement realized by block construction of index unit and rotary unit.



<Construction>

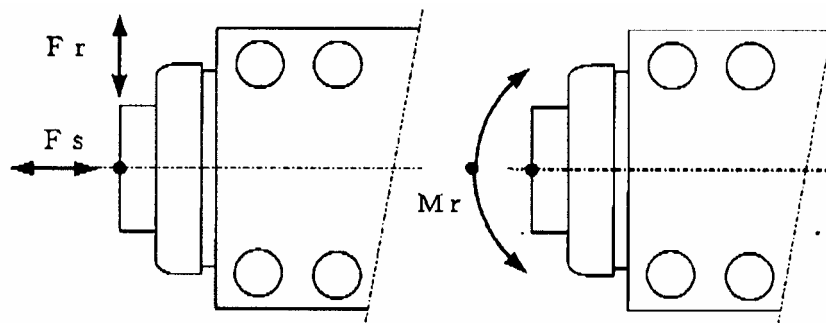


<Circuit used>

Specifications

Model		CRB1BS80 - 90D - X94 - 1
Fluid		Air (Non - lube)
Operating pressure range		0.3 ~ 0.7MPa
Ambient and fluid temperature		5 ~ 60
Dividing		4 division / turn (90 ° / division)
Rotation torque		33N·m (At 0.5MPa)
Dividing accuracy (when shipped)		±0.1 ° (±0.2mm at 100mm from the center)
Rotating direction		Both clockwise · counterclockwise available
Holding torque		50N·m
Connect port		Rc1/4
Weight		8150g
Air consumption	Rotary side	1.63L ANR (At 0.5MPa)
	Index side	0.07L ANR (At0.5MPa)

Allowable load & Allowable moment



Allowable load		Allowable moment Mr
Radial load Fr	Thrust load Fs	
1000 N	400 N	18 N·m

