

Rotary Cylinder

XT624-4

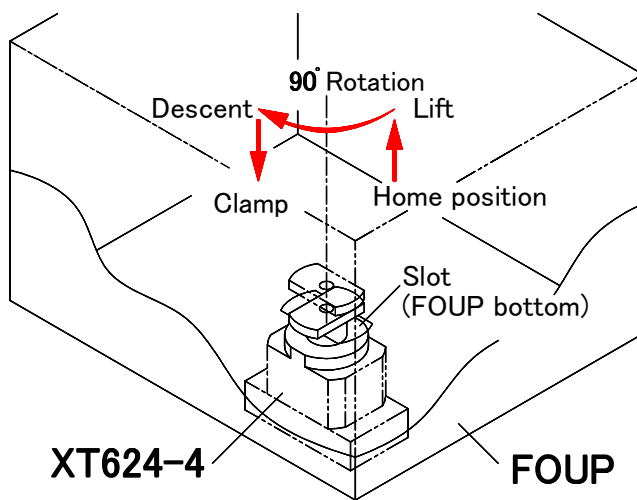
SMC CORPORATION
1-16-4 Shimbashi, Minato-ku
Tokyo 105-0004, JAPAN
URL: <http://www.smcworld.com>

Feature 1: Compact size

Hollow cylinder is adopted for direct operation part to minimize the bearing resistance of the rotating part, achieving the downsizing of the rotary actuator.

Feature 2: Compound actuator allows direct and rotating operation

Application: semiconductor manufacturing equipment, FOUP bottom clamping



Feature 3: Angle adjustment of ± 5 degrees on both ends is available for the rotating side

Feature 4: Four auto switches can be mounted for position detection

(Two for direct operation part, two for rotating part)

Specifications

Basic specifications

Fluid	Air	
Proof pressure	1.05MPa	
Maximum operation pressure	0.7MPa	
Minimum operation pressure	0.2MPa	
Ambient and fluid temperature	0 to 60°C (No freezing)	
Lubrication	Not required (Non-lube)	
Weight	150g	
Effective output	IN side	62N (At 0.5MPa)
	OUT side	85N (At 0.5MPa)

(Please refer to the next page for direct operating part, rotating part and auto switch specification.)

Specifications

Direct operation section

Bore size × Stroke	Ø16mm (Equivalent) × 10mm	
Piston speed	10 to 50mm/s	
Cushion	Not required	
Port size	M3	
Effective output	IN side	62N (At 0.5MPa)
	OUT side	85N At (0.5MPa)

Rotation section

Rotation range	90°
Angle adjustment range	Each rotation end: ±5°
Operating time adjustment range	0.2 to 0.7s/90°
Backlash	1° or less
Cushion	Not required
Effective output (Torque)	0.08N·m (At 0.5MPa)
Allowable kinetic energy	0.2mJ
Port size	M3

Auto switches

Type	D-F8N	D-F8P	D-F8B
Electrical entry	Perpendicular		
Wiring	3 wire		2 wire
Output	NPN type	PNP type	—
Application	IC circuit, 24VDC relay, PLC		24VDC relay, PLC
Power voltage	5/12/24VDC (4.5 to 28VDC)		—
Current consumption	10mA or less		—
Load voltage	28VDC or less	—	24VDC (10 to 28VDC)
Internal voltage drop	1.5V or less	0.8V or less	4V or less
Leakage current (At 24VDC)	100 µA or less		0.8mA
Indicator light	ON: Red light emitting switch		

How to Order

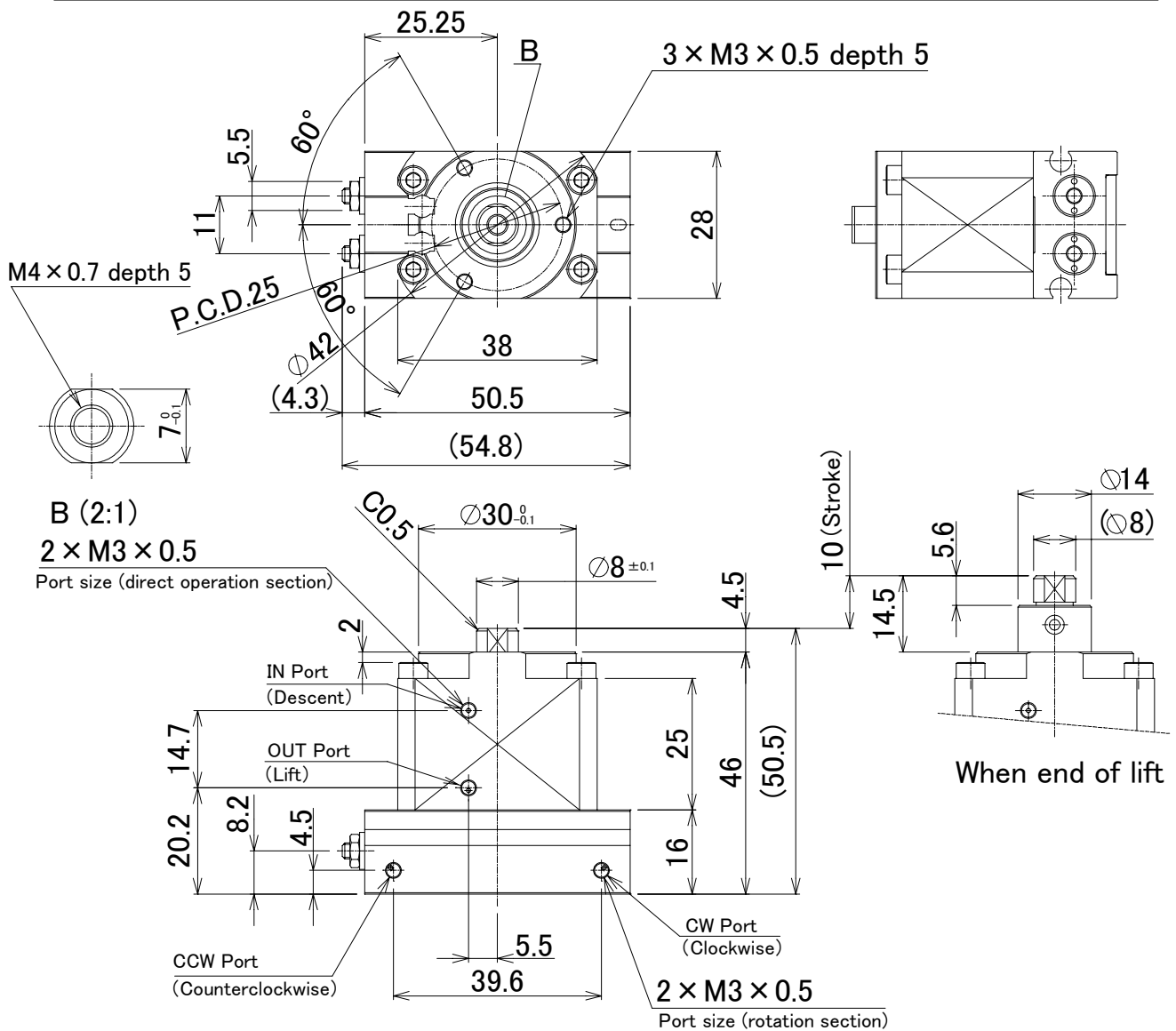
XT624-4-**F8N**

Auto switches (With 4 pcs.) (*1)

F8N	D-F8N
F8P	D-F8P
F8B	D-F8P

*1) Please refer to the Best Pneumatics (general catalogue) for detailed specification of the auto switch.

Dimensions: mm



- Note 1: The outline drawing shows the status that IN port and CCW port are pressurized.
 Note 2: The excess torque to the piston rod from outside causes malfunction and breakage of the internal parts.
 Note 3: The auto switch is shipped together (not mounted).

⚠ Caution To ensure the safest possible operation of this product, please be sure to read thoroughly the "Safety Instructions" in our "Best Pneumatics" (general catalog) before use.